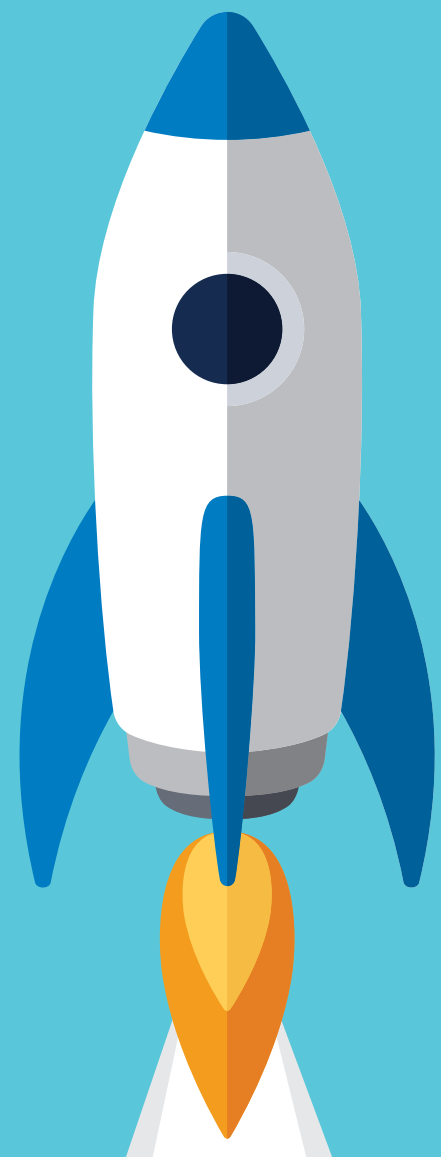




Authors:

Robb Geier, Anna d'Entremont,
Mary Ellen Hannon, Allie Panetta,
Annelise Eaton, Ben MacDonald



Mass Launch

Continuous Monitoring

Shared Accountability

Student Growth

State Agency

ESE collects an annual data snapshot. All districts and schools are rated by growth and performance percentile within each content area, by subgroup, along with district health and equity scores. Summative ratings are on a 100-point scale, show directional growth and are color-coded for ease of public understanding.



64 PROGRESSING

Family



Families can view individual student performance data at any time. The system identifies areas for focused improvement for all student performance levels.

Communities of Practice



In annual self-assessments, districts document improvement priorities. Increased data transparency supports development of Communities of Practice for districts focusing on similar priorities.

School Administrator



Sophisticated data analytics empower administrators to better target professional development and intervene earlier. Schools also receive a schoolwide Social Emotional Learning rating.

Teacher



Real time student and class performance data enables teachers to monitor outcomes and recalibrate instruction.

Student



Frequent, web-based micro-assessments aligned to the Massachusetts Curriculum Frameworks adapt to each student's current skill level.

Alignment to ESE Priority Areas:

Performance data from MassLaunch equips ESE, district administrators, educators, and students with information needed to reflect on current practice and set priorities for focused improvement.



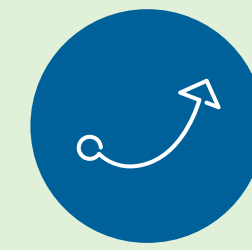
Strengthen standards, curriculum, instruction and assessment

Frequent assessments aligned to the Massachusetts Curriculum Frameworks provide teachers with timely access to actionable data. Educators can better target instruction to student needs and continually adjust based on student progress.



Promote educator development

Analyzing each class' current data, the system sets performance targets based on projected student growth during an academic year. Teachers use this data to set their goals and to monitor progress towards meeting these goals.



Turn around the lowest performing schools and districts

With regular access to performance data, ESE has the opportunity to provide targeted support to any district throughout the school-year. The annual data snapshot provides a formal means for the agency to identify underperforming and chronically underperforming schools and districts. These districts receive more intensive monitoring and on the ground support.

The district organizational health assessment and equity ratings promote reflection about the link between leadership, resource allocation decisions and student outcomes.



Use technology and data to support teaching and learning

A web-based system allows students, parents, teachers, administrators, and ESE to access relevant data from a single platform. The system promotes transparency and supports collaboration while also giving each stakeholder the necessary information to take ownership of their own growth.



Support the social, emotional, and health needs of students and families

Ongoing assessments of students' social emotional learning allow teachers and administrators to identify students needing additional support, recognize issues related to school climate early, and identify schools excelling in social emotional programming to share practices across schools. This may necessitate the development of Social Emotional Learning Standards for grades 1-12.